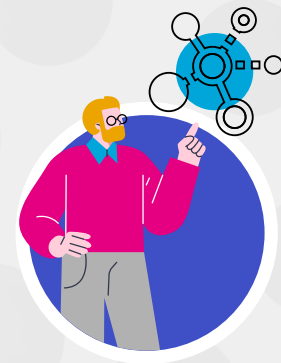


Why Should I Become an **isolved**[®] Partner?

isolved is the most-trusted human capital management (HCM) technology leader, offering the best combination of software and services for today's HR, payroll and benefits professionals. As an isolved Network Partner, you get a secure, scalable platform that protects your business, automates tasks and improves employee experiences—all supported by a best-in-class partner experience.



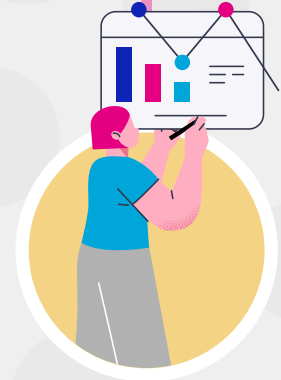
Intelligently Connected HCM Platform

Tap into the full potential of isolved People Cloud™, a modular and intelligently connected HCM platform that helps you and your customers' businesses grow. The enterprise-grade technology scales to meet your customers' needs—regardless of size or industry—to enhance overall satisfaction and retention, while also attracting new business.



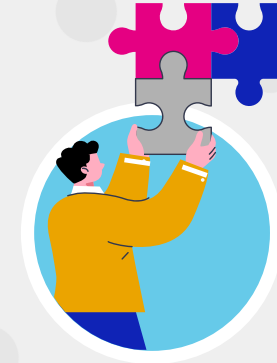
Secure and Compliant Solutions

Keep data safe with a partner that prioritizes security through robust encryption and regular security audits. Ongoing investments in security ensure sensitive data is safeguarded for you and your customers, while compliance tools ensure payroll and HR processes align with current regulations to reduce the risk of compliance-related failures.



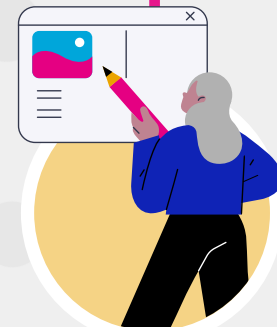
Comprehensive Support

Boost your sales and marketing initiatives with expert support. isolved assists with product demos and marketing collateral—whether you're looking to showcase the capabilities of People Cloud, highlight specific functionality, or need campaign support in the form of an email template, social media graphic or something else entirely, the isolved team has you covered.



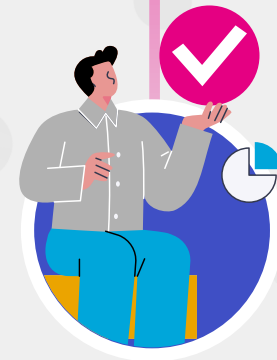
People Heroes Community

Network with like-minded service bureau professionals in the isolved People Heroes Community, which has approximately 2,000 members who source advice and provide product feedback—all while earning rewards! Our partners average 12 years of experience and help foster a collaborative environment to drive success.



Training for You and Your Customers

Access People Heroes University or attend an upcoming event to maximize your isolved investment. People Heroes University delivers training courses to help you get the most out of People Cloud, while events like isolved Connect provide hands-on training, continuing education credits and opportunities to meet 1:1 with product experts.



Future-Proof Solutions

Experience a real partnership with a company that owns and invests in its technology. isolved values your input in developing the tools that power your and your customers' businesses, ensuring they evolve to meet market demands now and into the future. In the last year alone, we've delivered over 3,500 enhancements to support overworked teams and optimize business practices.

Drive growth for your business and customers with the unlimited potential of isolved People Cloud. isolvedhcm.com

isolved[®]

© 2025 isolved. All Rights Reserved. N00240-1-EN